



**USER MANUAL  
YACHTEYE 4.0**

Created: 2019-02-19 14:58

Revisions:

<b>Date</b>	<b>Comment</b>	<b>Paraph</b>
01-12-2016	Initial Version	
17-01-2017	Updated for version 2.1.2.	
31-03-2017	Updated for version 2.3	
05-05-2017	Updated for version 2.5	
01-02-2018	Updated for version 3.4	
08-01-2019	Updated for version 4.1	

## TABLE OF CONTENTS

<b><u>1</u></b>	<b><u>INTRODUCTION</u></b>	<b><u>1</u></b>
1.1	WARNINGS	1
1.2	CONTACT DETAILS	1
1.3	PACKAGES & CUSTOMIZATIONS	1
<b><u>2</u></b>	<b><u>GENERAL NAVIGATION</u></b>	<b><u>2</u></b>
2.1	MAIN MENU	2
2.2	SUPPORTED GESTURES	3
<b><u>3</u></b>	<b><u>INFOBAR</u></b>	<b><u>4</u></b>
3.1	ENVIRONMENTAL DATA	4
3.2	NEXT DESTINATION	5
3.3	GENERAL MESSAGE	5
<b><u>4</u></b>	<b><u>MODULES – STARTER, DISCOVERY, EXPERIENCE</u></b>	<b><u>6</u></b>
4.1	3D POSITION	6
4.2	GALLERY	7
<b><u>5</u></b>	<b><u>MODULES - DISCOVERY &amp; EXPERIENCE</u></b>	<b><u>8</u></b>
5.1	ITINERARY	8
5.2	WEATHER	9
5.3	CALENDAR	10
5.4	SAFETY	11
5.5	SHIPS	12
5.6	HIGHLIGHTS	13
5.7	EXPLORE - DECKPLAN	14
<b><u>6</u></b>	<b><u>MODULES - EXPERIENCE</u></b>	<b><u>15</u></b>
6.1	WELCOME	15
6.2	TENDER & TOYS	16
6.3	FLEET	17
6.4	EXPLORE – 360 DECKS	18
<b><u>7</u></b>	<b><u>ADDITIONAL MODULES</u></b>	<b><u>19</u></b>

7.1 MAKKAHPOINTER

19

7.2 VIDEOFEED

20

**8 *SETTINGS***

---

**21**

## 1 INTRODUCTION

In this document, you will find the usage instructions of the Oculus YachtEye-unit.

YachtEye is the unique visual infotainment platform on board exclusive superyachts. The system shares valuable insights about the journey, the stay on board and the environment. You can interact with YachtEye via TV, touchscreens and iPads. This guide provides information about how to use your YachtEye unit.

### 1.1 WARNINGS

**DO NOT USE YACHTEYE FOR NAVIGATIONAL PURPOSES.**

### 1.2 CONTACT DETAILS

#### Oculus Technologies BV

Rapenburg 45                      t :     +31 (0)20 2238389  
1011 TV Amsterdam            e :     [info@oculustechnologies.nl](mailto:info@oculustechnologies.nl)  
The Netherlands                w :     [www.oculustechnologies.nl](http://www.oculustechnologies.nl)

**Support**                            e.:     [support@oculustechnologies.nl](mailto:support@oculustechnologies.nl)

### 1.3 PACKAGES & CUSTOMIZATIONS

There are three packages of YachtEye which allow you to use different modules. In this document, all screenshots are taken with the complete, full version enabled. Your version of the screen might differ, because of:

- Installed package
- Customizations /provided content by your administrator
- Available ship data

## 2 GENERAL NAVIGATION

### 2.1 MAIN MENU

The main menu of YachtEye will appear when the system starts up. This menu allows you to select any of the modules as described in the paragraphs below.

The main menu is selected when a blue bar highlights the Main Menu button.

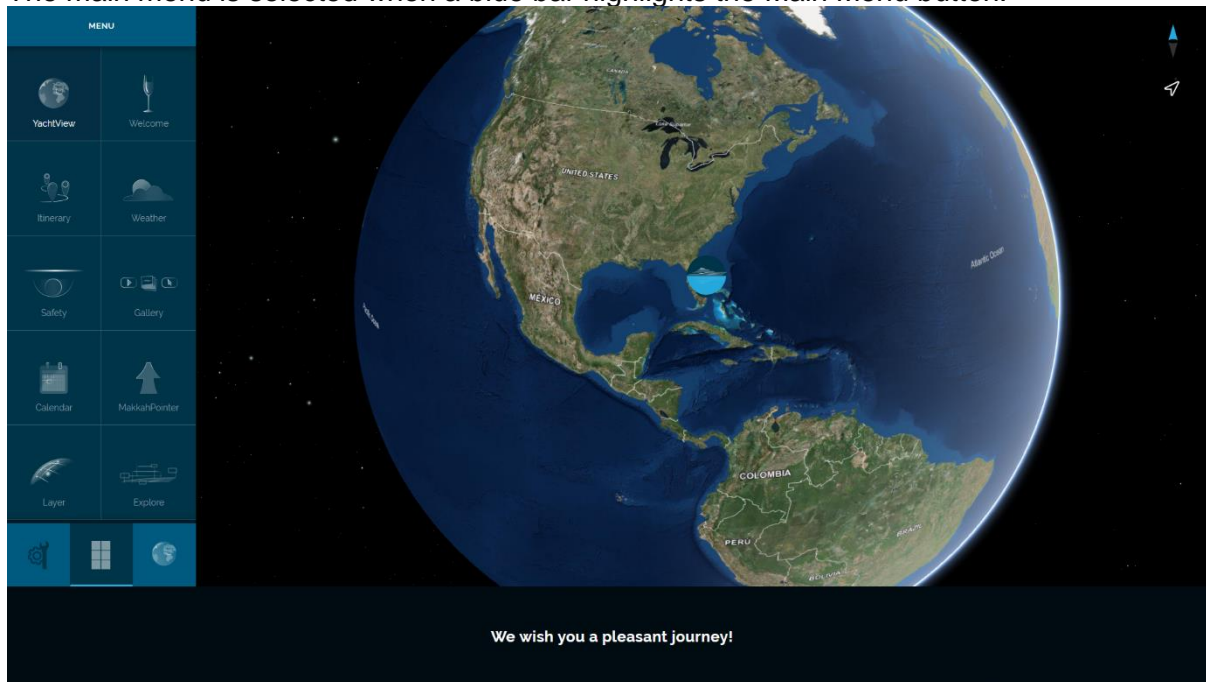


Figure 1. Main menu selected

By tapping the main menu button, the available modules are displayed in the menu panel.

When one of the modules is selected, the icon will appear as the most right icon on top of the menu panel. By clicking or tapping on that button, YachtEye will display the options for that particular module.

*The menu options could be restricted by your administrator and license.  
It is possible to hide the main menu bar in the Content Management Portal.*

## 2.2 SUPPORTED GESTURES

In all modules with an area map you can zoom in and out, pan, move or drag the position of the yacht by gestures on the screen.

Zoom in : swipe two fingers towards each other.

Zoom out : swipe two fingers away from each other.

Rotate : swipe one finger on the screen in any direction.

In the upper right corner of the map there are two buttons:

Compass : this button shows the orientation of the map, tap to reset to North-Up.

Home : this button resets the map to its Home position.

In all galleries, the user can swipe in a direction with one finger to go to the next (to the right) or previous (to the left) photo or video. Swiping is not supported for PDF files and websites.

When a gallery contains more than seven items, the thumbnail bar (at the bottom of the screen) can be navigated with a swipe to the left/right.

## 3 INFOBAR

The info bar contain the environmental data, next destination, or a general message.

### 3.1 ENVIRONMENTAL DATA

The envirovmental tab contains the current wind, temperature, sea-depth, heading and speed of the yacht.

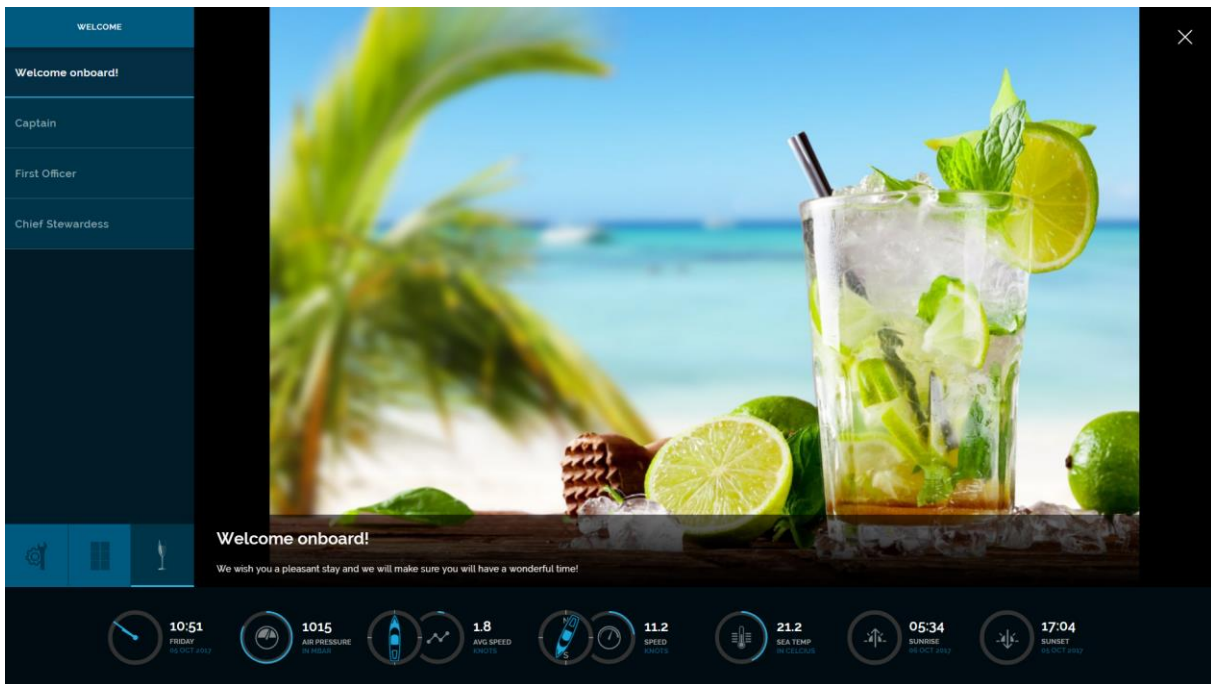


Figure 2. InfoBar

*The indicators, and their unit types depends on available information and settings by the system administrator.*



### 3.2 NEXT DESTINATION

The next destination tab contains the information about your next destination. This information is entered by your administrator.



Figure 3: Next destination

### 3.3 GENERAL MESSAGE

An informational message, written by your administrator and send to all screens attached.

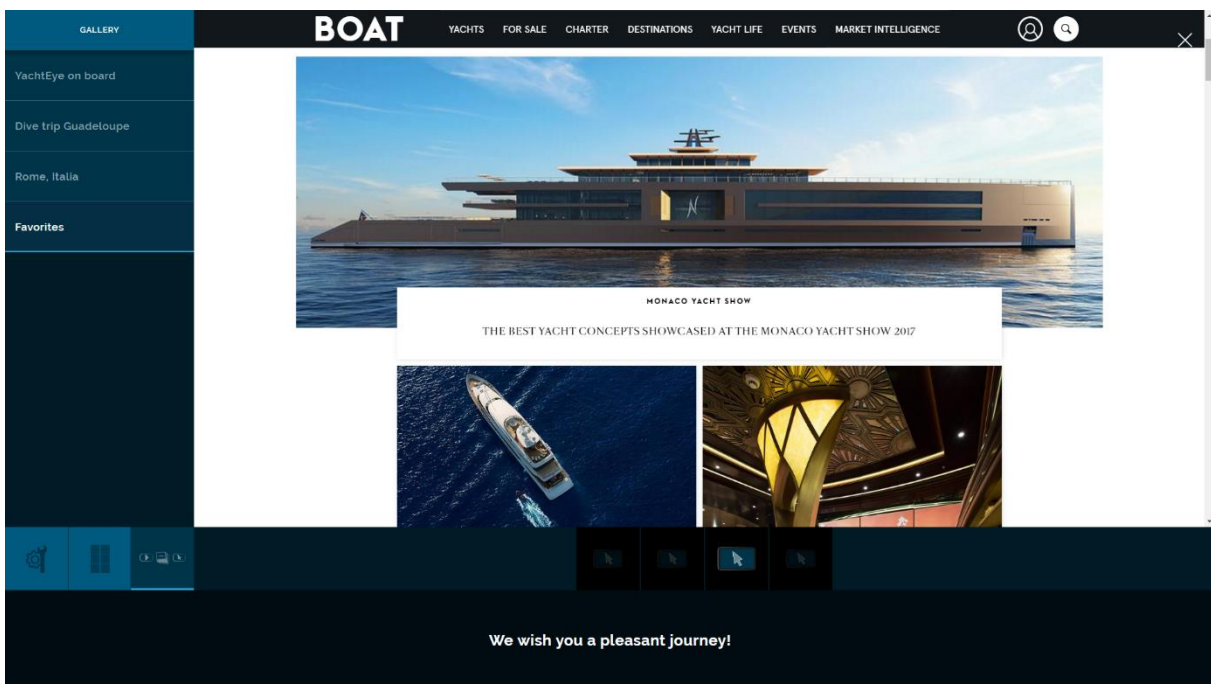


Figure 4: General Messenger

## 4 MODULES – STARTER, DISCOVERY, EXPERIENCE

### 4.1 3D POSITION

The module 3D position, has three submodules. First of all it shows the 3D position yacht on the GPS position on the globe. This module is available for all packages.

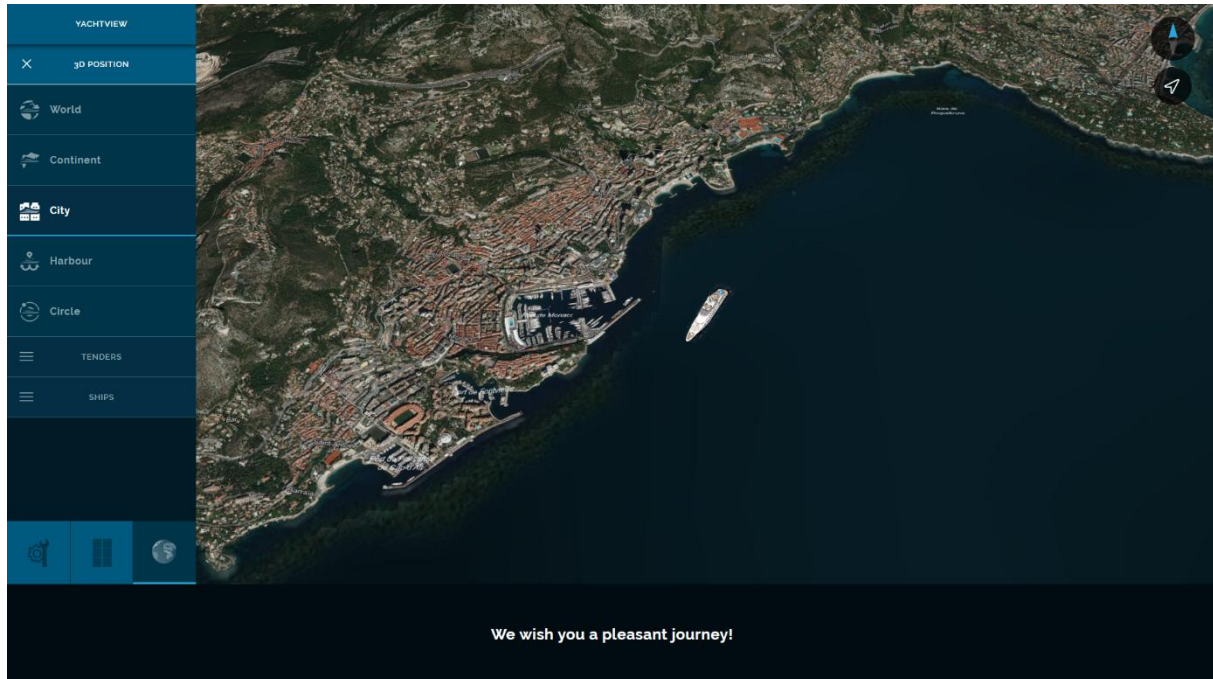


Figure 5. 3D Position – City view

There are several view options:

#### **World view**

This view shows the world as a globe with the yacht on its location.

#### **Continent view**

This view shows the location of the yacht from a bird's eye view. This view is to give a general indication of their current location.

#### **City view**

This view zooms in on the yacht's position and their surrounding cities.

#### **Harbour view**

This view hovers over the yacht and zooms in on to the harbour area surrounding the yacht.

#### **Current location**

Shows the location of the yacht as seen straight from above.

#### **Circle view**

This view provides a bird's eye view circling the yacht. Only the area directly surrounding the yacht is visible.

In case of the Discovery & Experience Package, Yachtview consists also the Tenders & Toys and a Fleet module. These features are explained in section 5 and 6 of this manual.

*The administrator may change the availability and characteristics of the views.*

## 4.2 GALLERY

The module Gallery shows one or more photo albums.

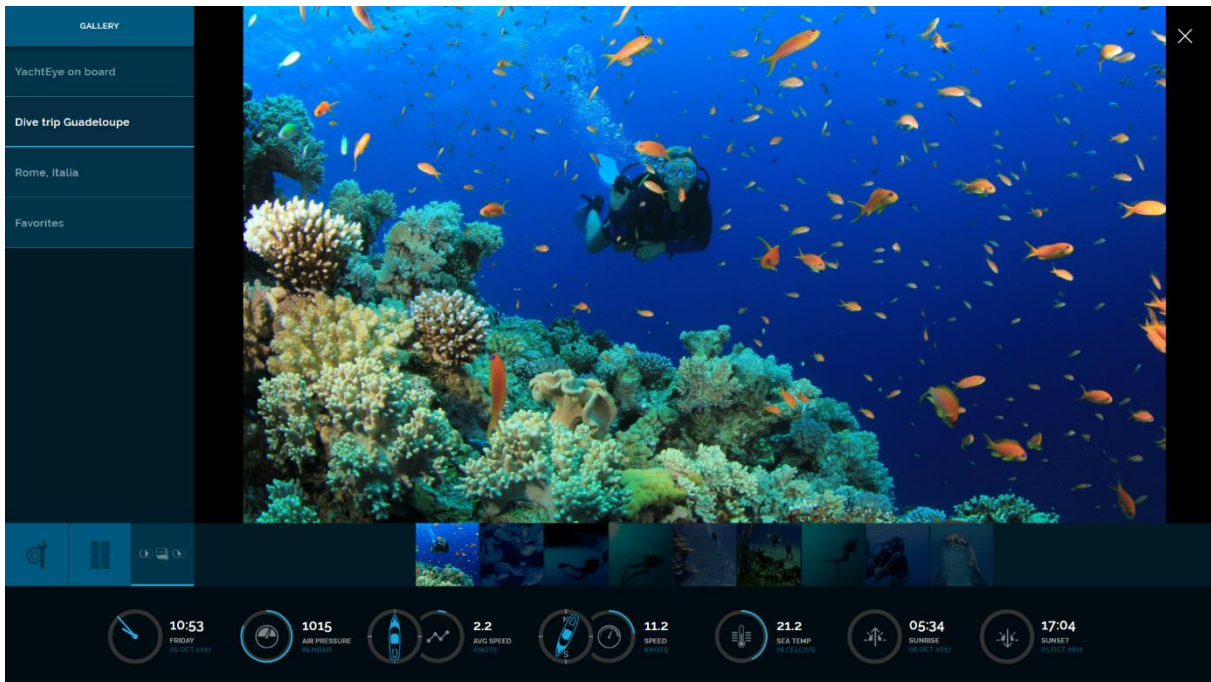


Figure 6. Gallery

Albums can be selected by tapping on the album title in the left panel. The photos, videos and optional introduction text will display. You can navigate by selecting the specific media, or use gestures to go to the next or previous media.

In case of the Discovery & Experience Package, the gallery also displays the pre-defined webpages. Explained in chapter 5 of this manual.

*The administrator provides the content for this module.*

## 5 MODULES - DISCOVERY & EXPERIENCE

### 5.1 ITINERARY

The module Itinerary shows the route and information for an upcoming trip.

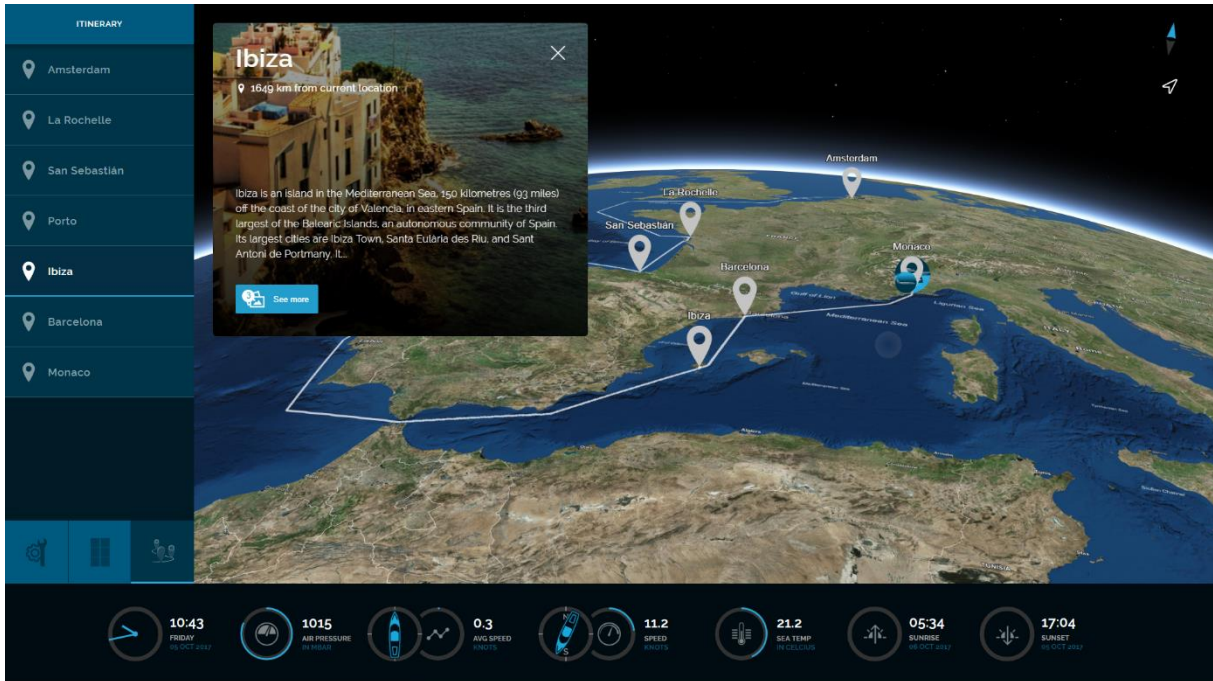


Figure 7. Itinerary - Overview

After selecting this module, the complete route of the itinerary will be displayed. Additional information about a specific destination will become available by selecting a destination in the bar on the left or on the map. To get more details about the destination, click "See more" (figure 8).

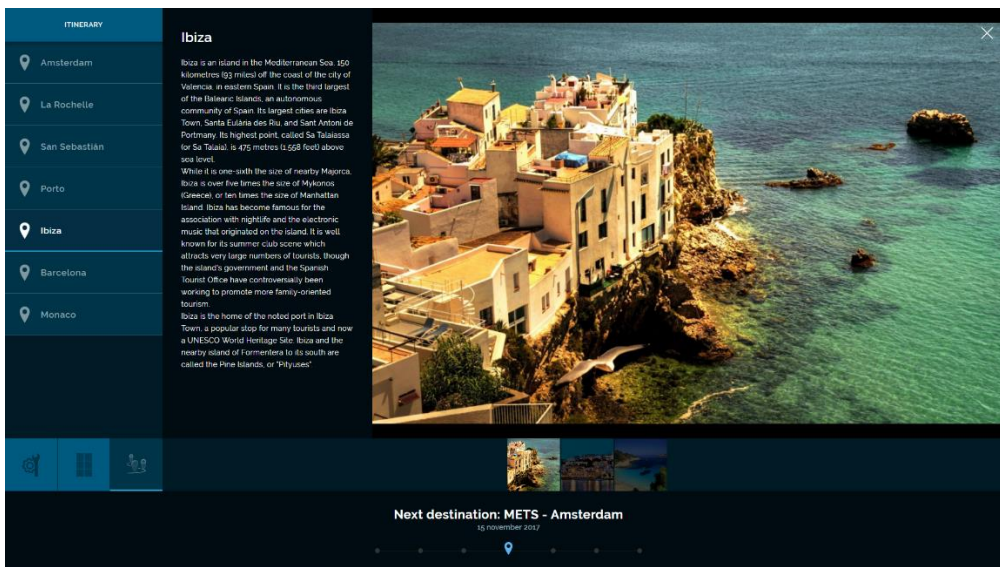


Figure 8. Itinerary – Destination

The administrator provides the content for this module.

## 5.2 WEATHER

The module Weather shows the weather of the current position (i.e. the nearest weather station), the next destination, and the favorites.



Figure 9. Weather

The favorites in the left menu bar can be managed by clicking on "SAVE TO FAVORITES" or "REMOVE FROM FAVORITES" in the pop-up (figure 9).

The current weather conditions for nearby locations will appear on the map based on the continent view. By tapping on a weather icon, the forecast for the selected location will display in a pop-up (figure 9).

This pop-up shows the weather forecast (temperature, cloud cover, precipitation, wind speed and wind direction) for the coming days.



Figure 10. Windy Widget

In the category 'Sources', there is the option to select Windy. Windy displays extended overlays, especially interesting for surfers (figure 10).

*Availability of weather information for the current location depends on the location of the yacht.*

## 5.3 CALENDAR

The module Calendar shows past and upcoming events on a calendar.

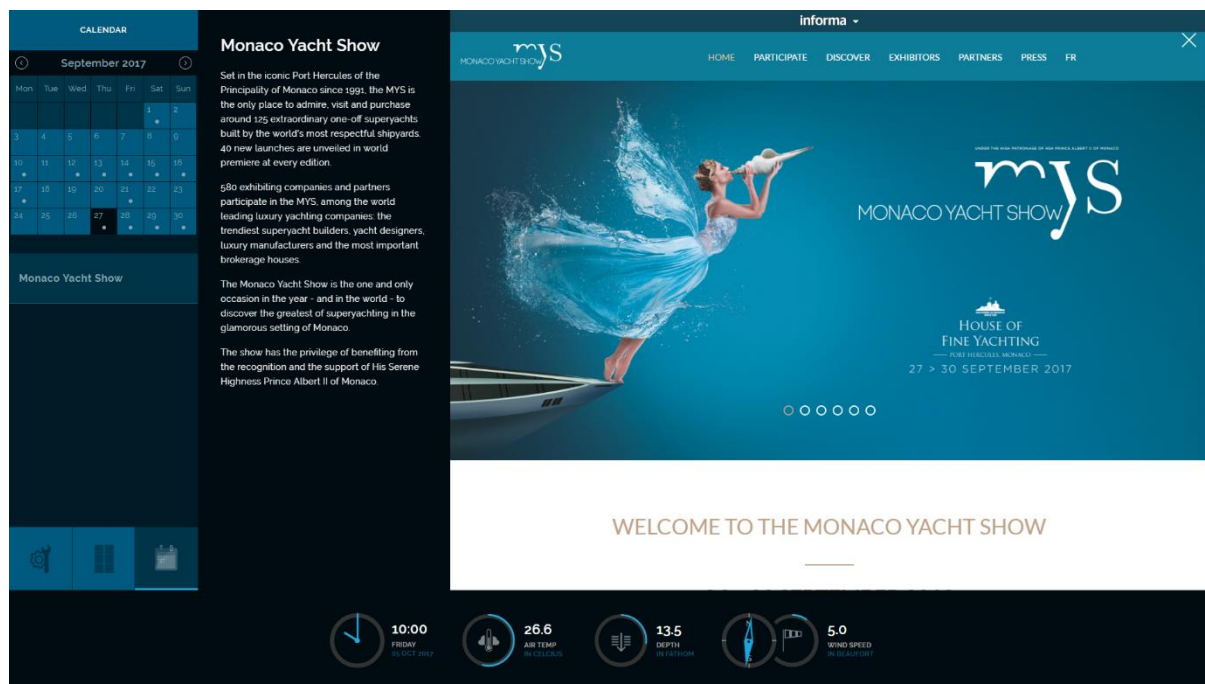


Figure 11. Calendar

As default, you will see the calendar for 3 weeks where the current day will be shown in the middle row. When an event is planned, the day will be marked with a blue dot.

Events for the selected date will be shown in the bar on the left.

By tapping on a single event, additional information is displayed. Through this information can be navigated with gestures or selecting a thumbnail in the bottom bar.

*The administrator provides the content for this module.*

## 5.4 SAFETY

In the Safety Module is it possible to integrate the safety plan and upload your Safety Video.

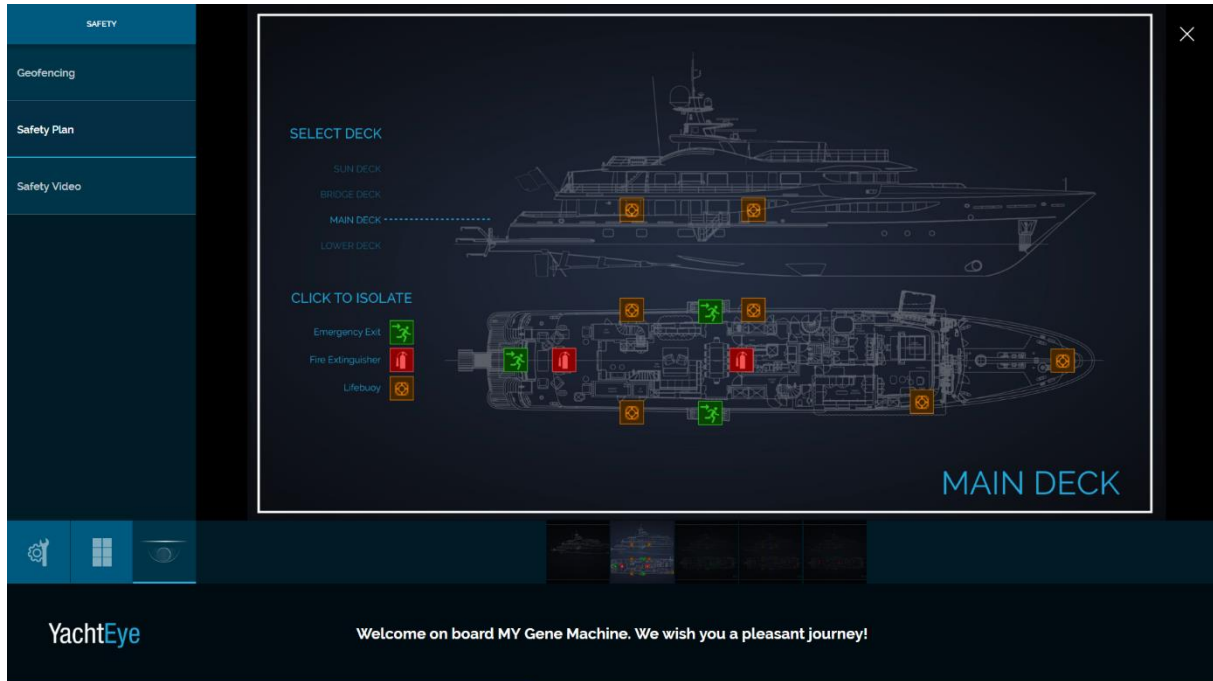
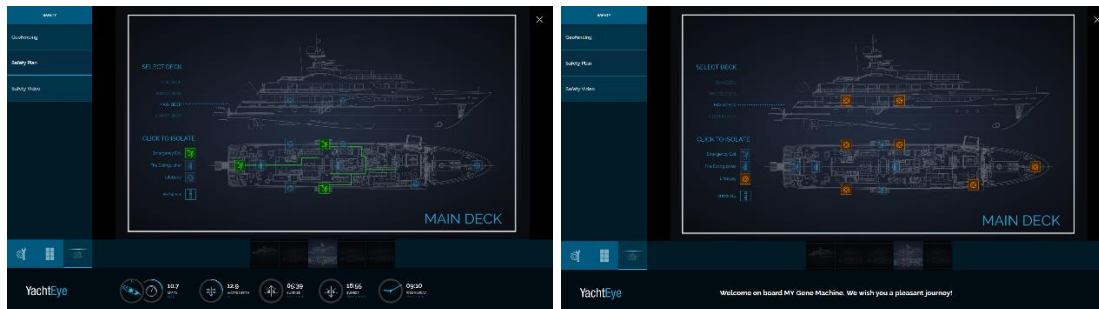


Figure 12. Safety – Safety Plan

As default you will see examples of a Safety plan. Slide through the images to discover more information about escape routes, life buoy locations and fire extinguishers.



The administrator provides the content for this module.

## 5.5 SHIPS

The module Ships shows the position of other ships near the yacht. This is an section in the 3D position Module.

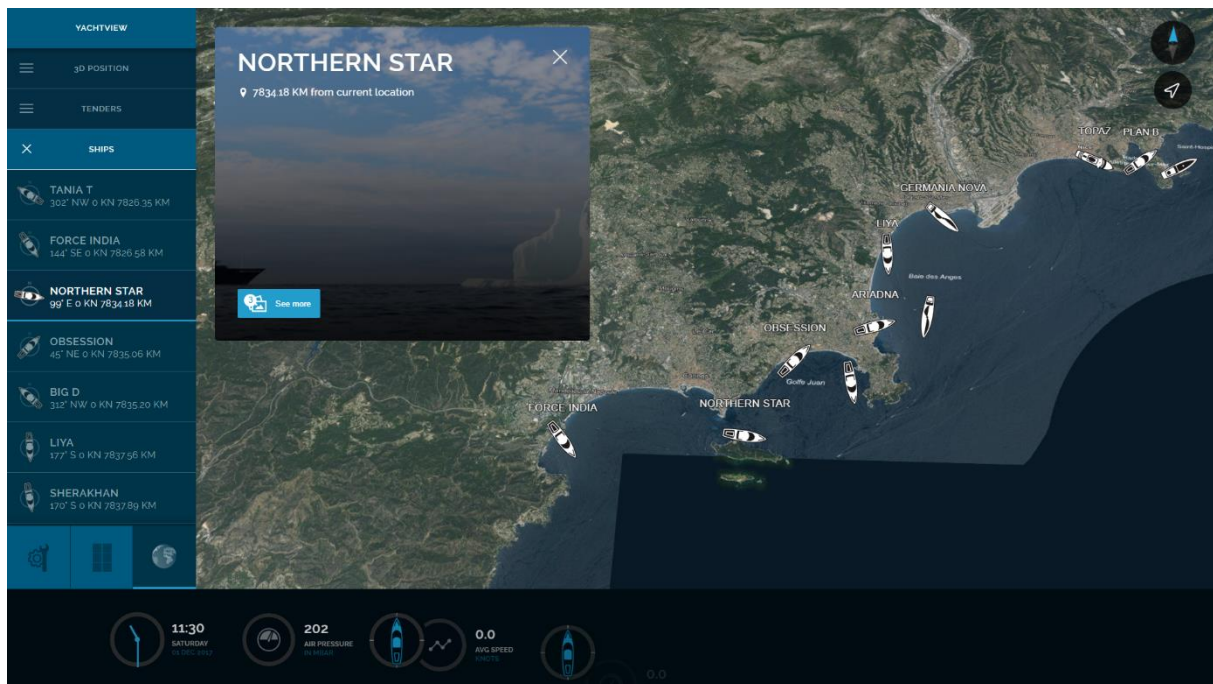


Figure 13. Ship

Additional information about a nearby ship will be displayed by selecting this ship. This can be done by selecting in the left panel or on the map. The map will zoom in on the location of the selected ship. Also it allows you to see images and specifications of the yachts that are listed in the SuperYachtTimes database.

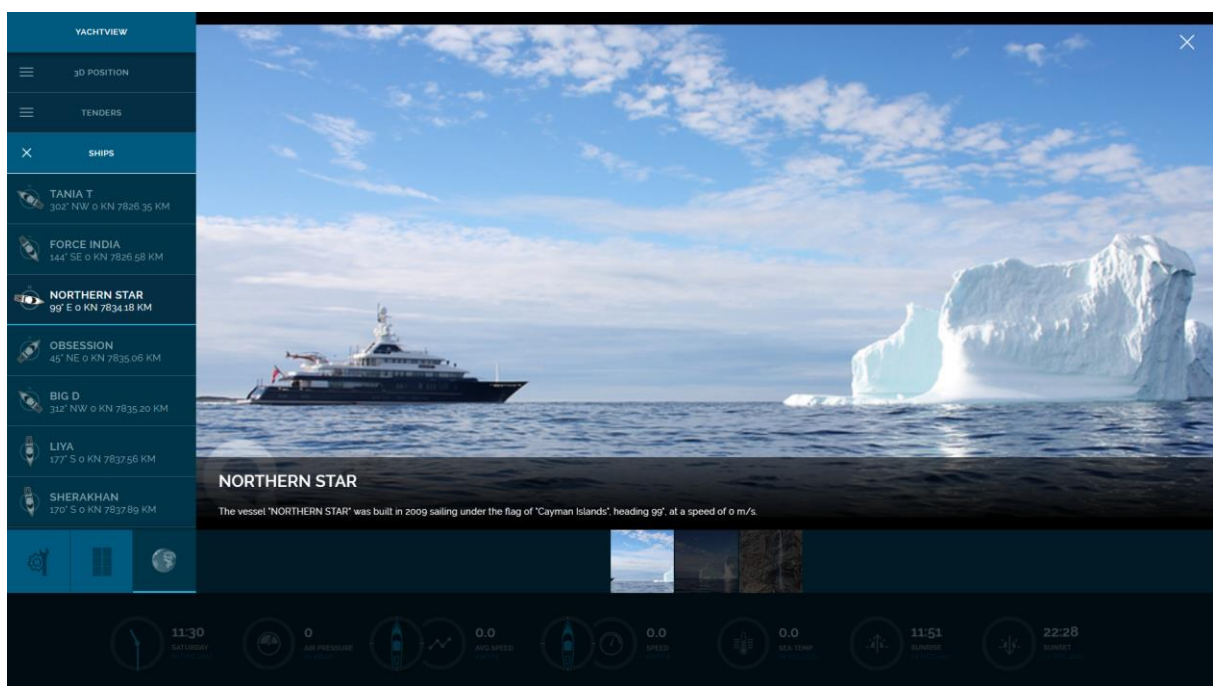


Figure 14. Ship – SuperYacht Times Database



## 5.6 HIGHLIGHTS

The module 'Highlights' shows different categories with points of interests.

When selecting a category, those categories are drawn on the map.

If you select a single point of interest on the map by tapping on the map, a popup will be shown with further information about this specific point.



Figure 15. Highlights

If you would like more or other content in YachtEye as map overlay. Please contact us.

*Oculus Technologies provides the content for this module.*

## 5.7 EXPLORE - DECKPLAN

The module 'Deck plan' in the Explore feature shows the General Arrangement of the yacht.



Figure 16. Explore – Exploded view

Slide the yacht open, click on Deck Plan and slide through the different decks of the Yacht.



Figure 17. Explore – Deck Plan

## 6 MODULES - EXPERIENCE

### 6.1 WELCOME

The module Welcome provides the necessary information, when entering aboard for the first time. Introduce the crew or provide insights about the yacht.

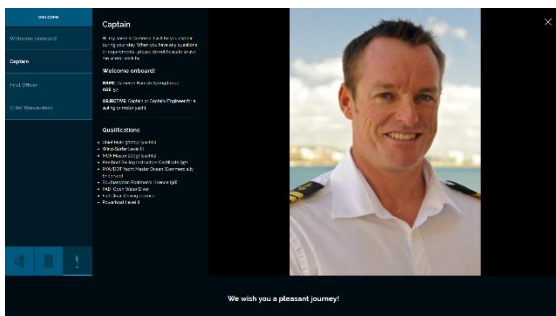
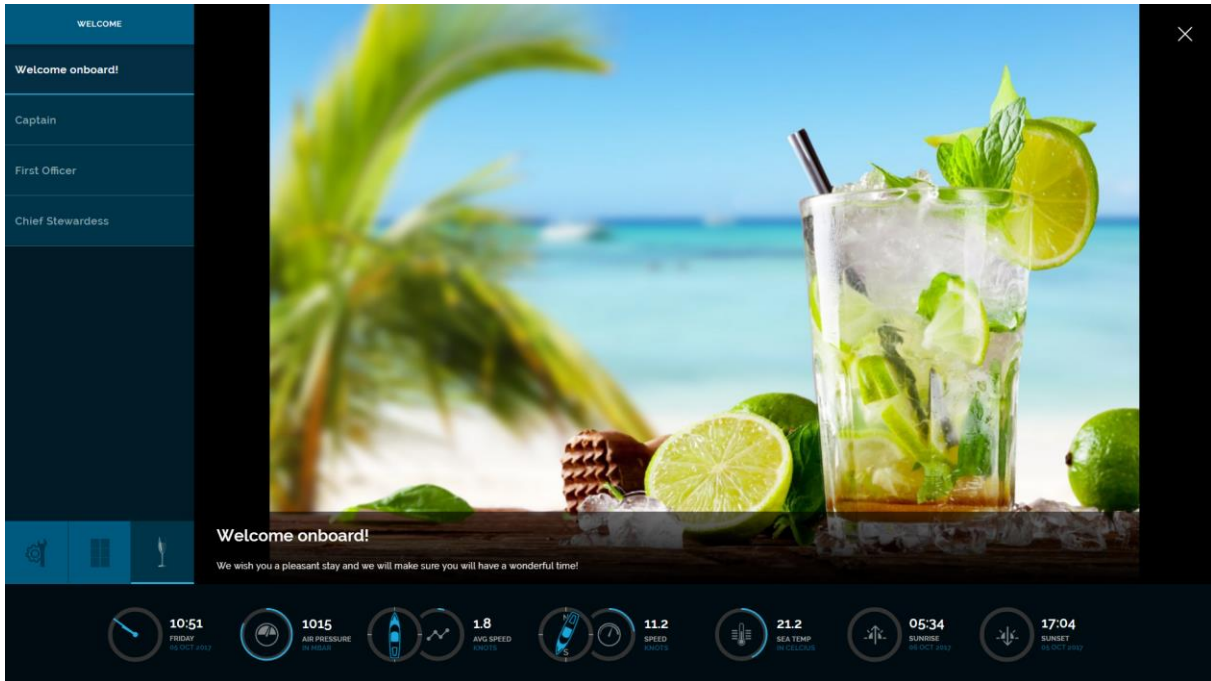


Figure 18. Welcome on Board

A gallery can be selected by tapping on the section title in the left panel. The photos, videos and optional introduction text will display. You can navigate by selecting the specific media, or use gestures to go to the next or previous media.

*The administrator provides the content for this module.*

## 6.2 TENDER & TOYS

The module Tender & Toys shows the position of tenders and toys belonging to the yacht. This is an additional section in the 3D position module.

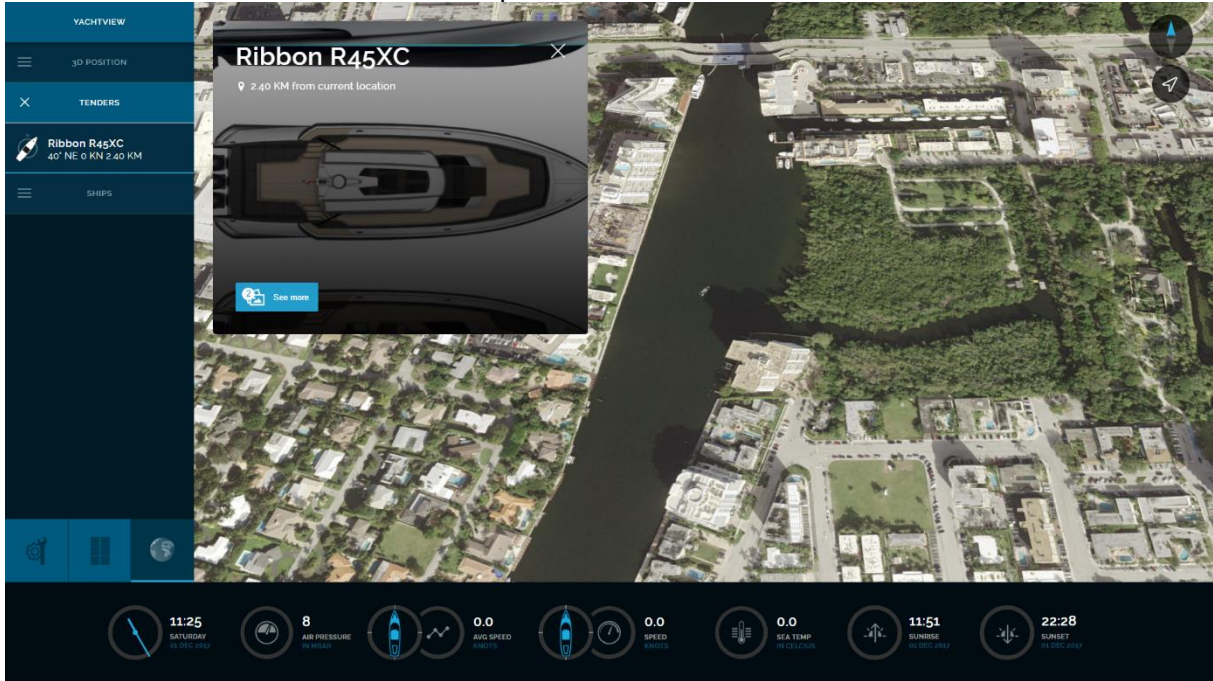


Figure 19. Tenders & Toys

Additional information and the distance of the tender and Toys from the yacht will become available by selecting the tender or toy in the bar on the left or on the map. After selecting the tender in the panel on the left, the map will zoom in on the location of that tender or toy. To get more details about the tender or toy, click "See more" (figure 19 and 20).

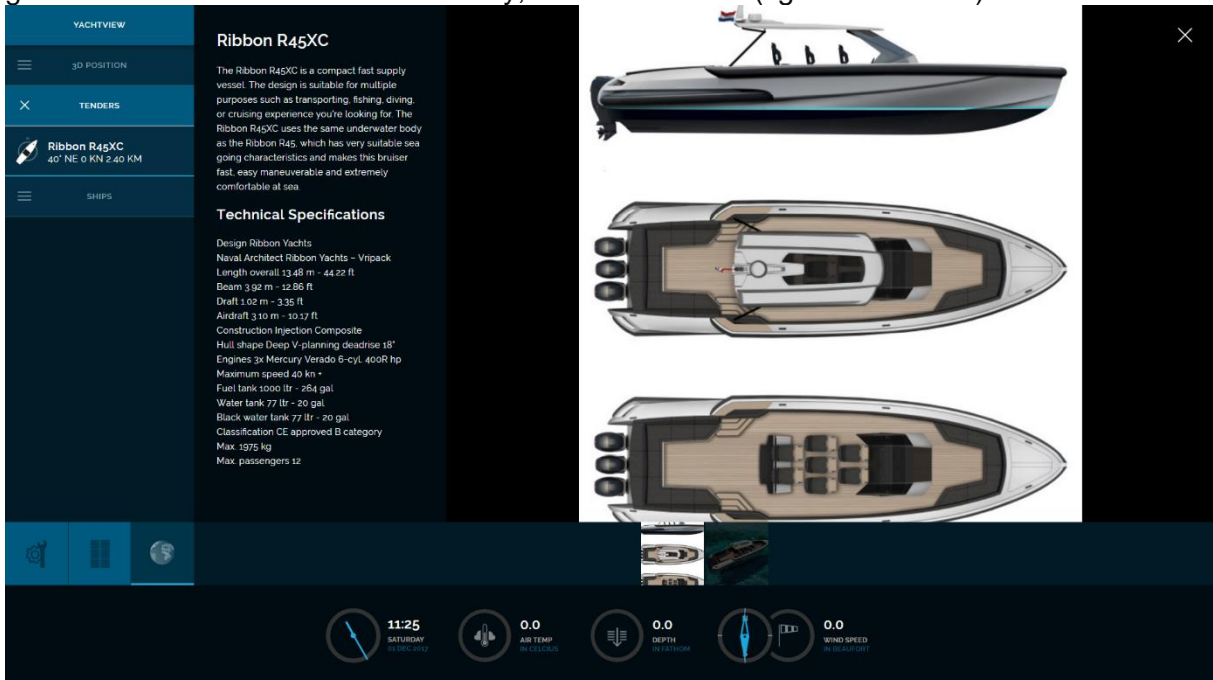


Figure 20. Tenders & Toys - Information

The administrator provides the content information about the tender and toys.

## 6.3 FLEET

The module Fleet shows the position of your sister yachts, jet and other assets on a fixed position of the globe. This is an additional section in the 3D position module.

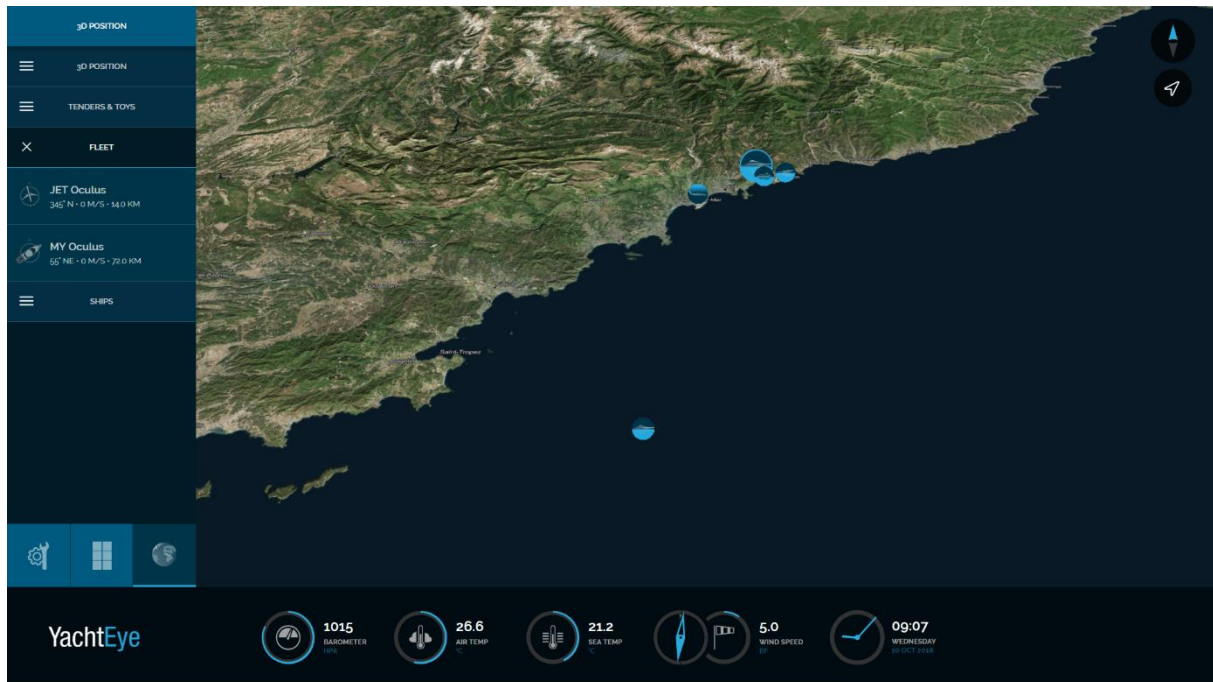
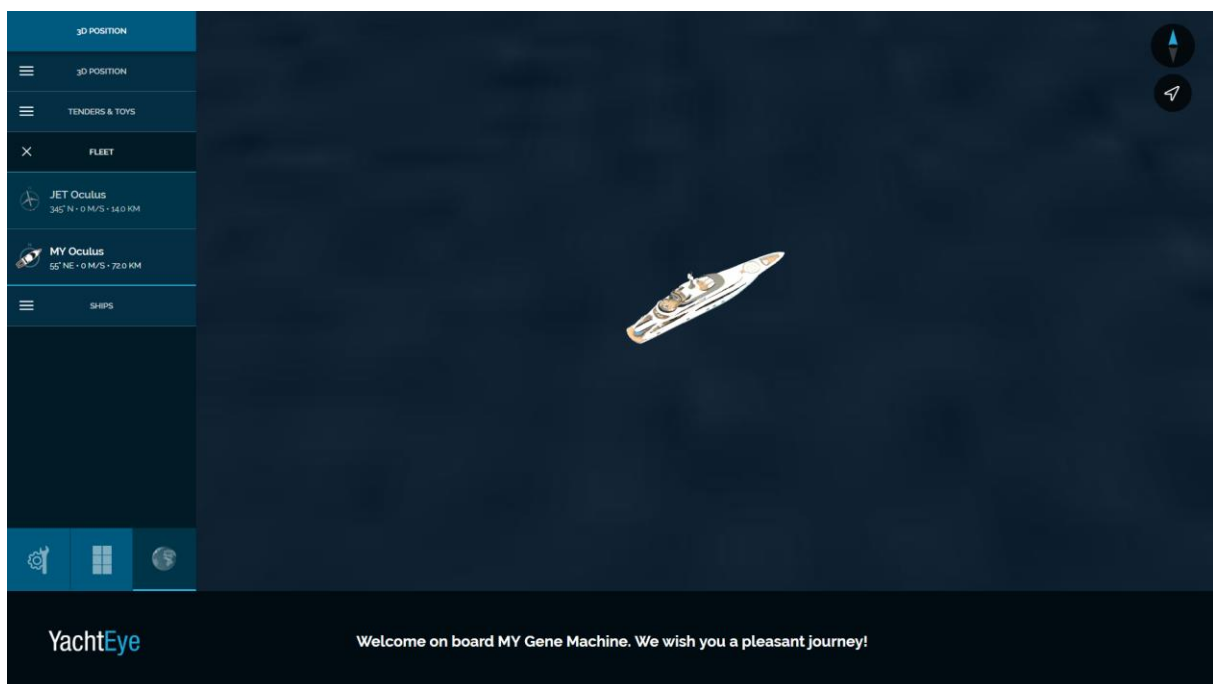


Figure 21. Assets - overview

Additional information and the distance of the Assets from the yacht will become available by selecting the specific assets in the bar on the left or on the map. After selecting the asset in the panel on the left, the map will zoom in on the location of that asset. To get more details about the assets, click "See more".



The administrator provides the content information about the assets.

## 6.4 EXPLORE – 360 DECKS

The module '360 Decks' in Explore shows you more detailed information per deck.

Slide the 3D yacht in Explore open, click on '360 Decks' and browse through the yacht.



Figure 22. Explore - Exploded view

On the left hand side you can browse through the different decks. The middle column will adjust the deck plan, according to the selected deck. If provided, the right side will show custom images per deck.

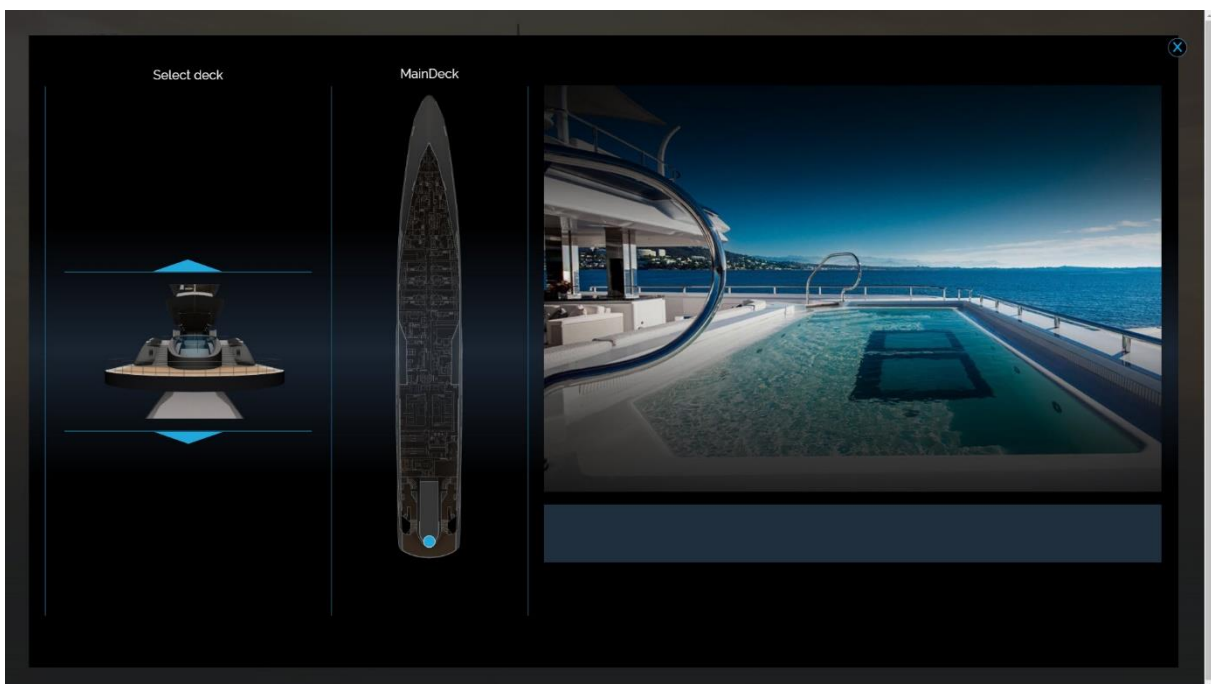


Figure 23. Explore - 360 Decks

## 7 ADDITIONAL MODULES

### 7.1 MAKKAHPONTER

The module MakkahPointer shows information about the position of the yacht and the prayer times.

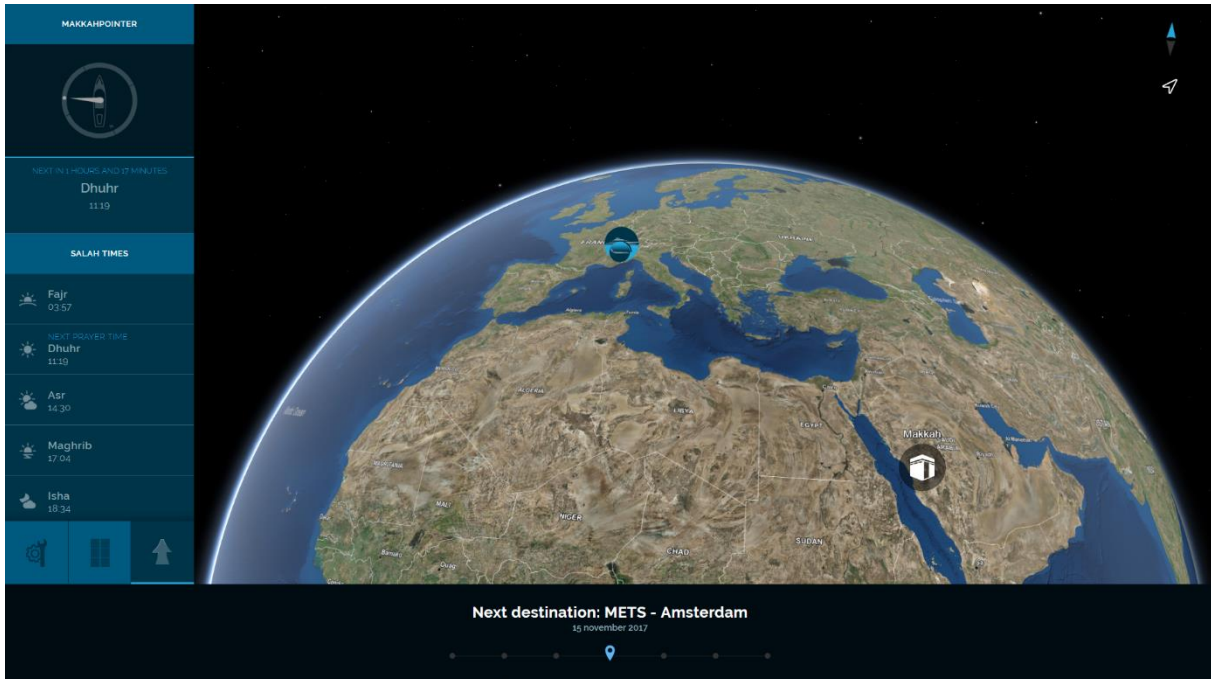


Figure 24. Makkahpointer

In the left panel, the yacht is shown in the middle of a compass. The yellow arrow is pointing towards Makkah.

Salah times are shown below the compass. Both the yacht and Makkah are pointed out on the map by icons (figure 24).

*The prayer times are based on the exact location of your yacht and the selected calculation method or are manual entered by your system administrator.  
The animation for this module depends on settings by the system administrator.*

## 7.2 VIDEOFEED

The module Videofeed shows video images from the yacht's CCTV system.



Figure 25. Videofeed

Cameras can be selected by tapping on the menu item in the left panel.



## 8 SETTINGS

The settings panel allows you to edit the map layers of the YachtEye unit.

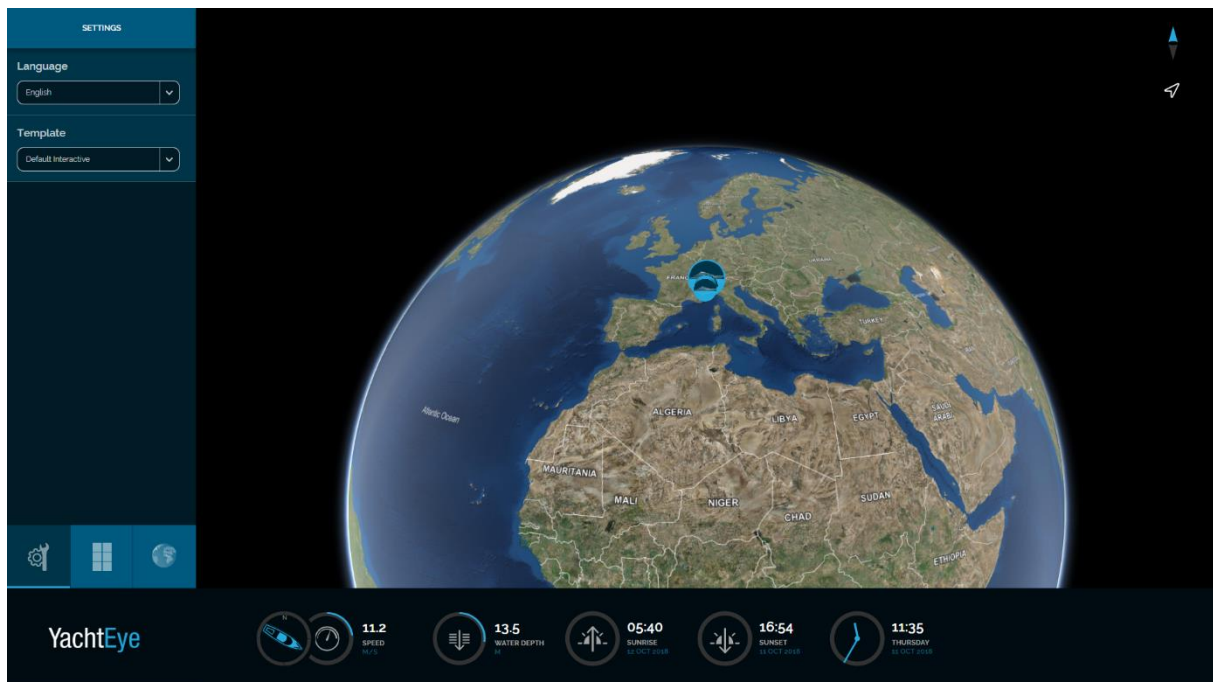


Figure 26. Settings

### Template

Selection of the active template.

### Language

Change language by clicking or tapping on the currently selected language. YachtEye will immediately change to the next selected language. Keep tapping to select the next language (English, Spanish, Russian, Arabic).

*The available options are dependent on the settings by the administrator.*